





# What is an implosion?

At Trash Academy, one of our primary goals is to complicate the seemingly simple and straightforward issue of trash. Understanding, unpacking, and analyzing complex systems is a fundamental part of our praxis. The 'implosion' is a unique and fascinating research method for exploring hidden connections and complexities, pioneered and developed by professor Donna Haraway. Because the implosion method fosters the development of concrete, situated knowledge, it is especially useful for helping us to understand the world as it is rather than as it is perceived through the often subjective lenses of ideology, politics, or personal perspective.

Trash Academy's unique angle on communicating via the implosion method involves horizontal collaboration with community members, youth, artists, activists, environmental justice advocates, and experts. Because we prefer to address the serious issues of climate change and environmental justice through the point of entry of fun and creativity, we visualize and diagram the implosion rather than relying exclusively on text. Trash Academy's implosions visualize the way in which trash "lives" in the world around us, and how the world "lives" in it.

If you would like to explore the implosion method as a possible educational tool, please visit our website for guidance and detailed instructions: [trashacademy.org/implosion](http://trashacademy.org/implosion)

# Glossary

**Adaptive reuse:** the process of reusing a structure, either for its original or a new purpose

**Baby boom:** the period of time between 1946 and 1964 in the US when there was a significant increase in birth rate

**Block captain:** a Philadelphia resident, registered with the City, who organizes cleaning and beautification efforts for their block, working closely with the Philadelphia More Beautiful Committee

**C&D:** construction and demolition

**CDC:** community development corporation; a non-profit organization that supports communities, often through the development of affordable housing and community services that meet local needs such as education, job training, healthcare, and commercial development

**Circular economy:** an economic model that seeks to eliminate waste and pollution, and regenerate natural systems, through an ongoing reuse of materials and sharing of resources

**CLIP:** Community Life Improvement Program; a City of Philadelphia program that supports the clean-up of public spaces, including graffiti removal, vacant lot clean-up, and trash pick-up for neighborhood cleanups. Contact through 311

**Deconstruction:** the careful disassembly of building parts with the goal of material salvage for reuse

**Demo boom:** an increase in the rate of building demolition, especially for private sector development, occurring since 2009 in Philadelphia

**Demolition:** the dismantling, razing, destroying, or wrecking of a building

**Desulfurization:** the chemical process for the removal of sulfur; flue gas desulfurization (FGD) removes sulfur dioxide from exhaust flue gases of coal power plants, a process that can produce synthetic gypsum as a by-product

**Drywall:** a building component, made of a gypsum core with a paper facing, used for walls, ceilings, and partitions in residential and commercial structures

**Durock:** a brand of building panels that is manufactured by United States Gypsum (USG); the tile backerboard is made of treated water-resistant gypsum that is covered with a coated fiberglass mat

**Feedstock:** a raw, renewable material used as fuel for processing or manufacturing another product

**Fiberock:** a brand of drywall panels made of synthetic gypsum and cellulose, manufactured by United States Gypsum (USG)

**Green jobs:** jobs that produce goods or provides services that benefit the environment or conserve natural resources; jobs that involve making their company's production processes more environmentally friendly or use fewer natural resources

**Gypsum:** a mineral made of calcium sulfate dihydrate that is mined and processed to be used as drywall, plaster, chalk, and soil additives, among other uses

**Modular fast architecture:** a process of designing structures for which building parts are prefabricated off-site, and then shipped to and assembled at the building site

**Next use:** an intended next-use market for material from construction and demolition projects

**Plaster:** a building material, commonly made of gypsum or lime, that starts off as a paste and hardens upon drying, used for protective or decorative coating of walls and ceilings

**Redlining:** the discriminatory practice of withholding loans or insurance from neighborhoods based on racially and ethnically biased assessments of economic risk; the red lines on maps used to designate these neighborhoods

**Renovation:** the process of making building improvements, often to achieve modernization

**Repurposing:** the use of a material or structure for a purpose other than its original purpose

**Reuse:** the use of a material or structure more than once

**Salvage assessment:** a tool, such as a form or survey, used to identify and inventory materials that may be disassembled prior to demolition or during deconstruction

**Sanitation convenience center:** one of six sites where Philadelphia residents may drop off oversized trash, yard waste, and recycling. No construction debris is allowed, and they may not be used by commercial contractors and vehicles

**Securock:** a brand of drywall panels made of treated gypsum, combined with fiberglass face and back, manufactured by United States Gypsum (USG)

**Sheetrock:** a brand of drywall panels made of gypsum with a paper facing, manufactured by United States Gypsum (USG)

**Short dumping:** the illegal disposal of trash, debris, and recyclable material in a street, vacant lot, or any place where permission is not granted by the property owner; term is unique to Philadelphia

**Soil amendment:** a material added to soil that beneficially changes the properties of the soil

**Source separation:** the strategy and practice of identifying and sorting waste materials on a job site, allowing for salvage and ultimate reuse of materials

**Sulfide gas:** a colorless gas made of hydrogen sulfide that is extremely flammable and highly toxic, both naturally occurring and used or produced in industries such as mining

**Tax abatement:** in Philadelphia, an exemption from the payment of real estate taxes based on all or part of a building improvement for a set number of years; meant to encourage new construction or rehabilitation of a property

**Tax deduction:** per the IRS, a deduction for property owners for their donation of salvaged building materials to a qualified nonprofit organization whose mission is to salvage reusable building materials

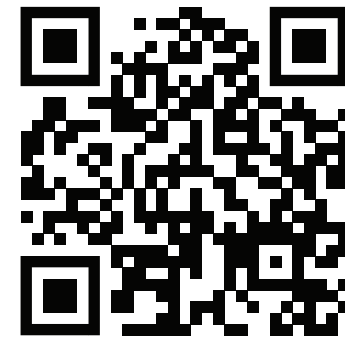
**Tipping fee:** the funds paid by waste haulers to dump trash or recyclables at landfills or recycling centers

**Waste transfer station:** a facility where municipal solid waste is delivered from collection vehicles and then reloaded onto larger transport vehicles for delivery to landfills or other disposal facilities

# Deconstruction

will cost you less than demolition

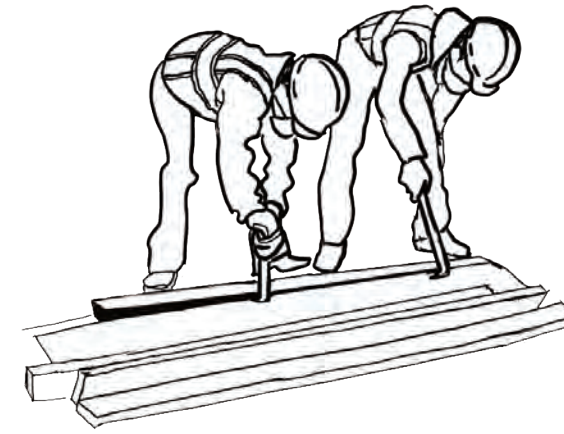
**1** Check us out & let's get your project started



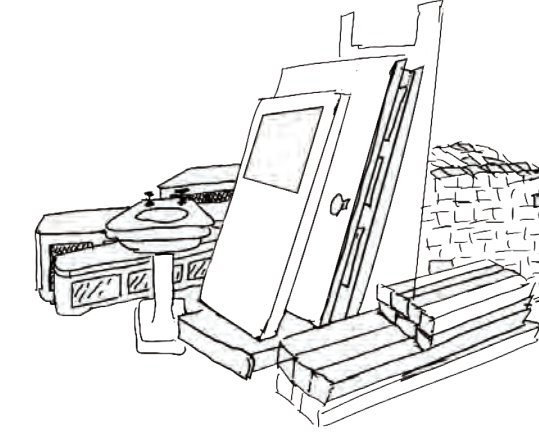
**2** Get a free estimate of your donation value



**3** Deconstruct your building



**4** Donate the building materials & collect tax savings



Philadelphia Community Corps

Deconstruction diverts over 90% of materials from the landfill

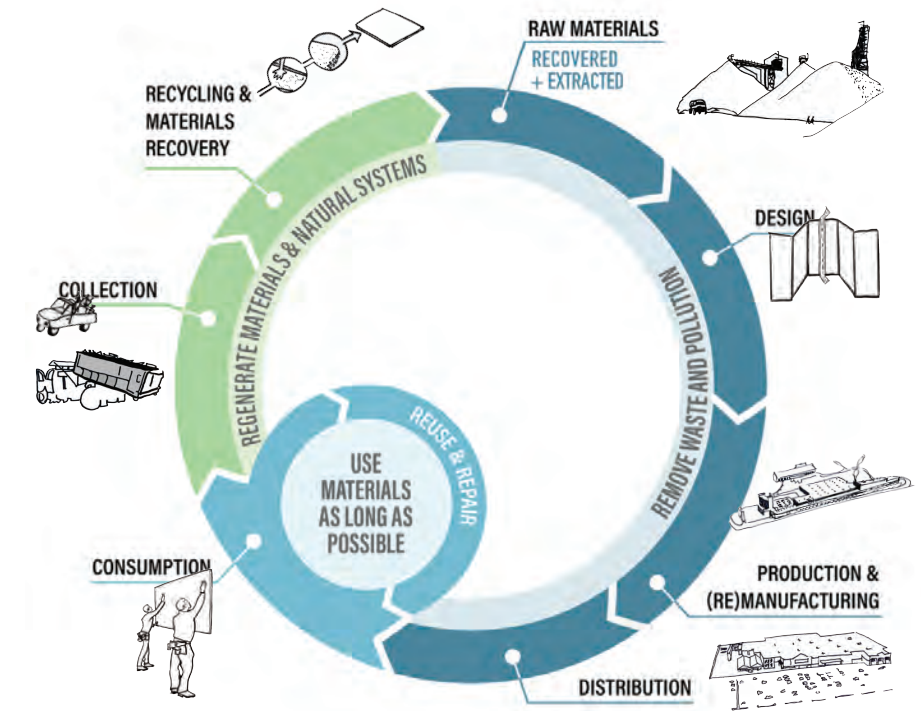
Reduces the need to harvest new resources

Provides materials for reuse

Cost-benefit analysis sample: A 2,500 SF rowhome project

	Deconstruction	Demolition
Cost	\$69,739	\$35,000
Value of Materials that can be Donated	\$135,000	\$0
After Tax Savings	\$56,700	\$0
Net Cost	\$13,039	\$35,000

# Circular Economy



Circular Economy image courtesy of Circular Philadelphia

PREVENTION

COMMUNITY ACTION

## MC VEIGH E WESTMORELAND ST DUMPING HISTORY

HEAVY DUMPING STARTS 2016

5-17-2020

8-18-2020

10-18-2020

OCTOBER 2021

5 8 12 13 14 17 24 26

TOGETHER WE CAN MAKE A DIFFERENCE

**TAKE ACTION**

SEE IT, REPORT IT!

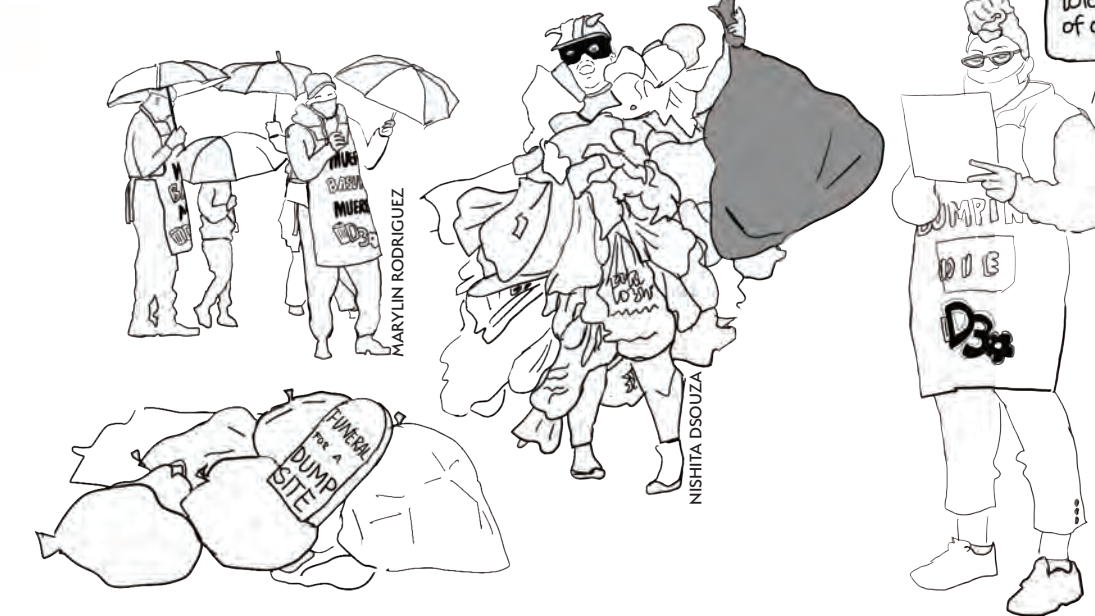
Report illegal dumping when you see it.

If you see anyone dumping on vacant lots or City properties, CALL 911.

If you are reporting it after it happened or see illegally dumped trash, then CALL 311.

# Community groups taking action in Kensington

**HACE's Team NAS + Fairhill United for Livability**  
Addressing the issue of dumping



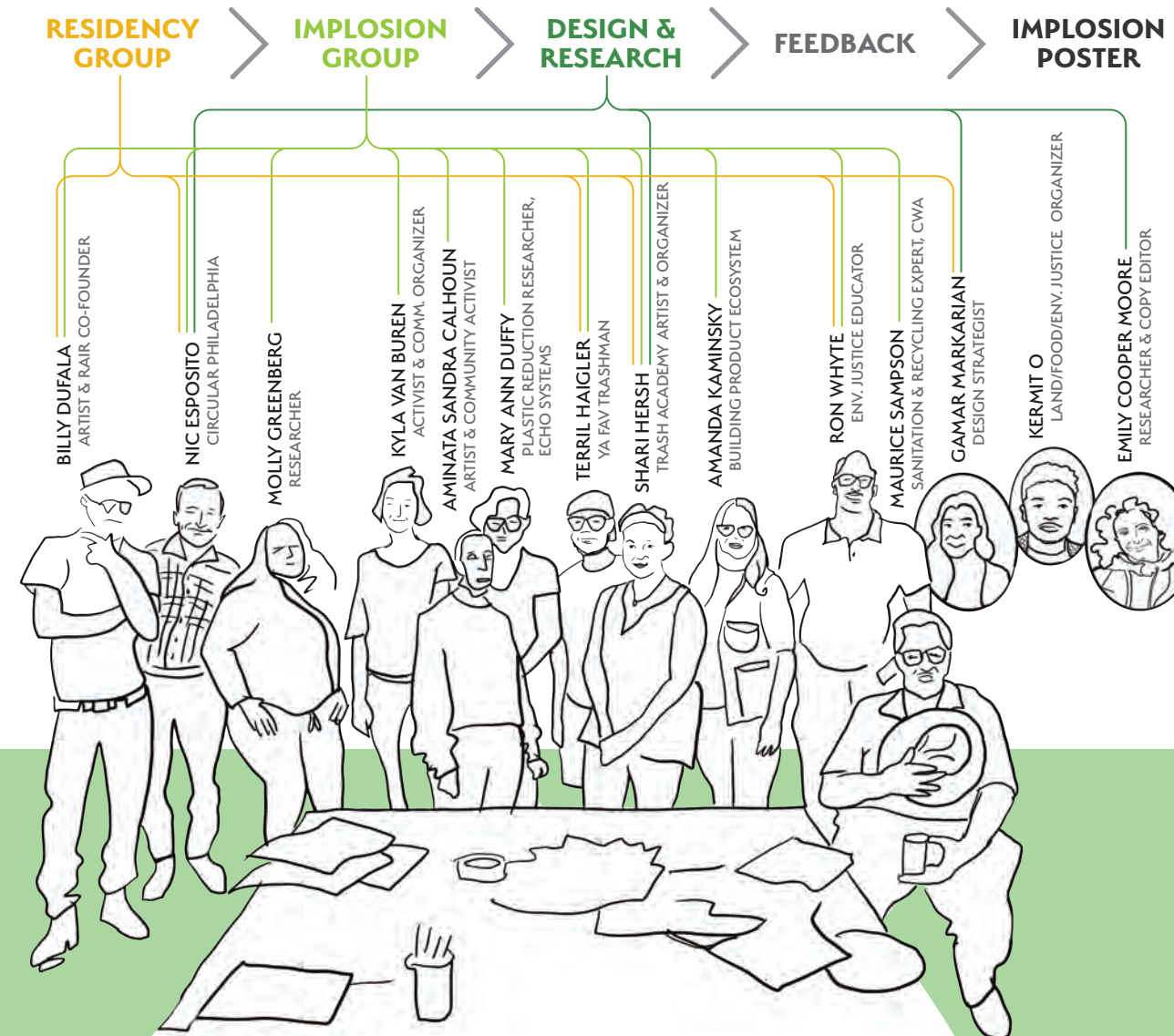
**Youth United for Change**  
Sanitation Campaign



A Funeral For A Dumpsite #DieDumpingDie #MuereBasuraMuere

# Drywall + Dumping Implosion

DUMPING CAMPAIGN



# Clean Philadelphia NOW!

A campaign to stop the dumping

## JOIN US!

Take the survey or sign the letter to join.

Go to [www.trashacademy.org](http://www.trashacademy.org) or scan the QR code



Clean Philadelphia NOW! is the formation of an alliance and campaign to address issues of adequate waste collection and litter abatement, with the purpose of eliminating open dumping in Philadelphia forever. The agenda and the platform of the campaign will be determined by those groups and individuals who choose to join.

Solutions need to be a part of a citywide strategy

- 1 Education & Awareness
- 2 Prevention Regulations & Incentives
- 3 Abatement
- 4 Enforcement

For citations and resources, please scan this QR code



This campaign is initiated by:



Dumping in Philadelphia & Clues to Solutions: An implosion of the drywall found in dumped bags across the city © City of Philadelphia Mural Arts Program / Shari Hersh, Gamar Markarian.

This project is funded by the PTS Foundation and The IPB Foundation

